

Can you increase  
a building's  
volume while also  
enhancing it's  
existing character?

Our response seeks to  
utilise the qualities that the  
house already has.

[Y/N] Studio were asked to re-imagine a 2-bedroom house in Walthamstow, London. Natural light, space and character are enhanced by introducing a series of new pitched volumes (externally) or cuts (internally) which provide an additional bedroom with ensuite, a family bathroom and an increased ground floor with access to the garden.

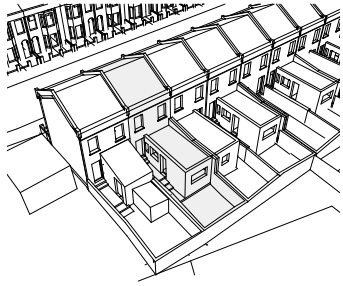
The building will be clad in a single material to unify the front and the back of the building whilst still retaining the inherent character of the street.

Patel/Dey House  
Client: Private  
Value: £150K  
Status: Planning  
Date 2016-2017

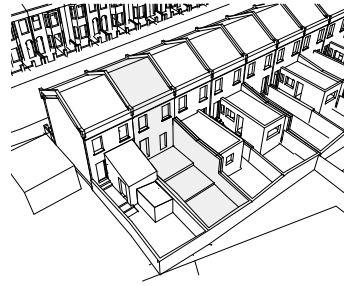
Project Team  
Alex Smith, Ayse Cagin Bailey



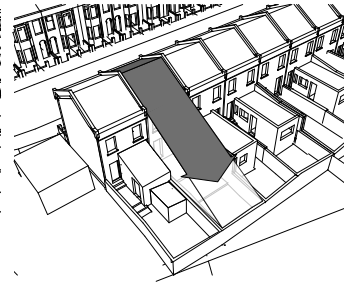




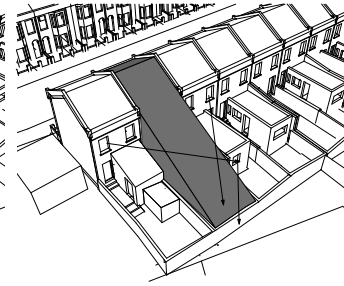
Existing.



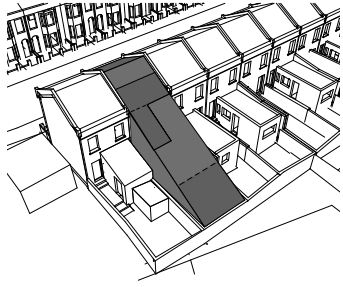
Demolition.



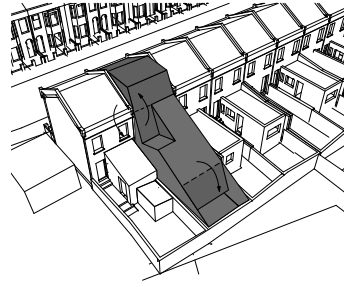
Roof Extension.



The resulting form does not obscure views from habitable rooms.



Cut along boundary and parapet lines.



Fold.



The folds create forms reminiscent of the main house building.



The building is clad in a single material to unify its form.

